

Everlife™  
LUXURY VINYL TILE

MSI  
Making Dream Surfaces Attainable



XL CYRUS BRALY

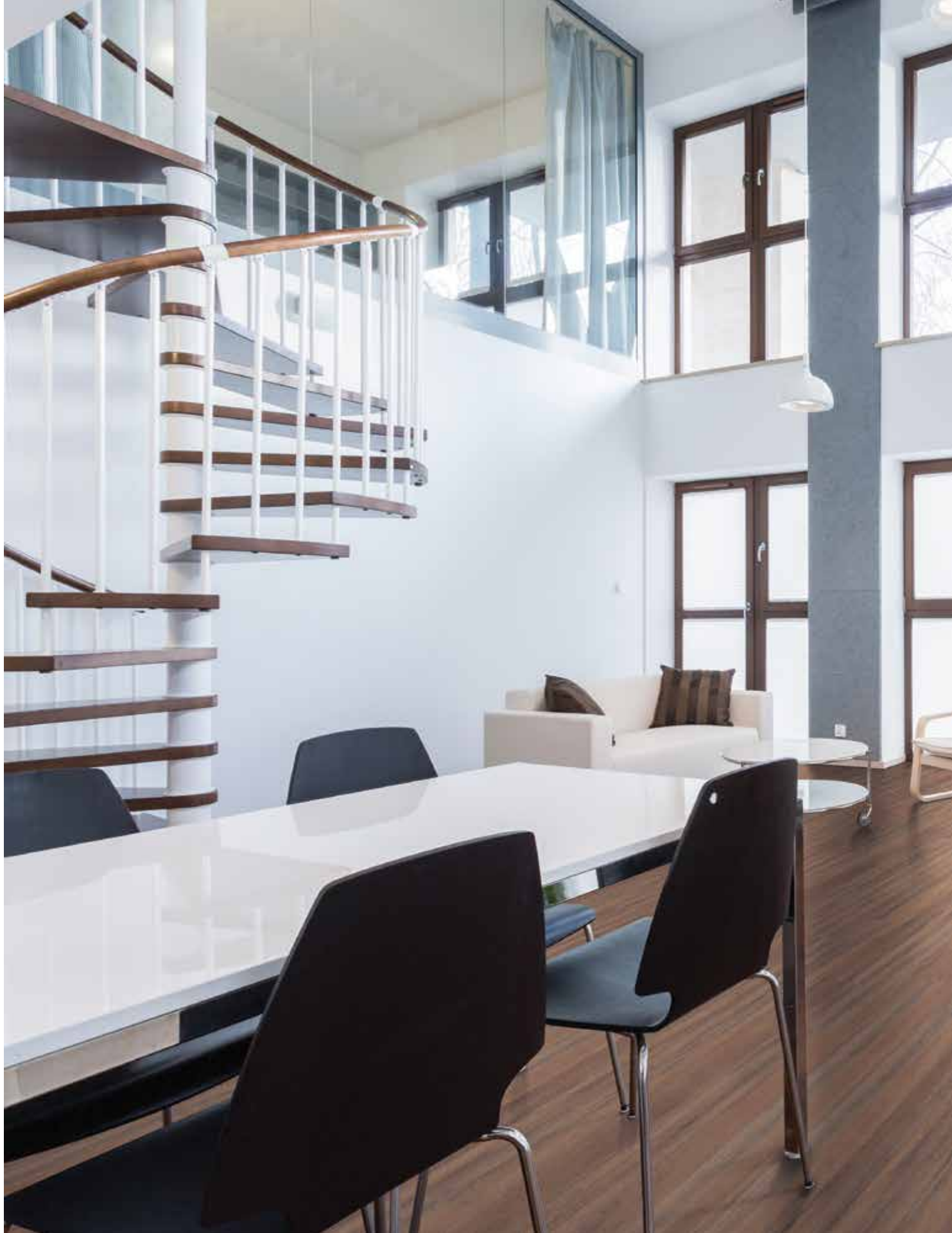
EverlifeLVT.com

**MSI's Everlife Luxury Vinyl Tile (LVT) Collection** stands up to the busiest of homes and light commercial spaces, without sacrificing comfort or style. Create affordable, easy-care floors with a range of today's most on-trend, 6x48", 7x48" and 9x60" wood-look luxury vinyl planks in two versatile lines: DryBack, a flexible glue-down vinyl flooring, and Rigid Core—a next generation, 100% waterproof vinyl plank flooring featuring an easy-install locking system. Warranty-backed, FloorScore and GreenGuard Gold certified, the Everlife Collection is pioneering LVT flooring.





Everlife™ — FROM MSI







Technical Specs	6
Transitions & Trims	8
<hr/>	
<b>Rigid Core</b>	
Cyrus Series	10
XL Cyrus Series	22
Andover Series	30
Prescott Series	38
<hr/>	
<b>Glue Down Flexible</b>	
Katavia, Glenridge & Wilmont Series	30
<hr/>	
EverlifeLVT.com	38



Everlife products are made with the highest product quality, safety, and enviromental standards.

## RIGID CORE

Stone-based core with pre-attached backing



### Prescott Series

7"x48"  
6.5 mm thickness  
5.5 mm core  
1.0 mm lpxe backing  
20 mil wear layer



### Andover Series

7"x48"  
5.0 mm thickness  
4.0 mm core  
20 mil wear layer  
Painted beveled edge



### XL Cyrus Series

9"x60"  
5.0 mm thickness  
4.0 mm core  
12 mil wear layer  
Painted beveled edge



### Cyrus Series

7"x48"  
5.0 mm thickness  
4.0 mm core  
1.0 mm lpxe backing  
12 mil wear layer

## GLUEDOWN / DRYBACK

Traditional Gluedown LVT

### Wilmont Series

7"x48"  
2.5 mm thickness  
20 mil wear layer



### Glenridge Series

6"x48"  
2.0 mm thickness  
12 mil wear layer

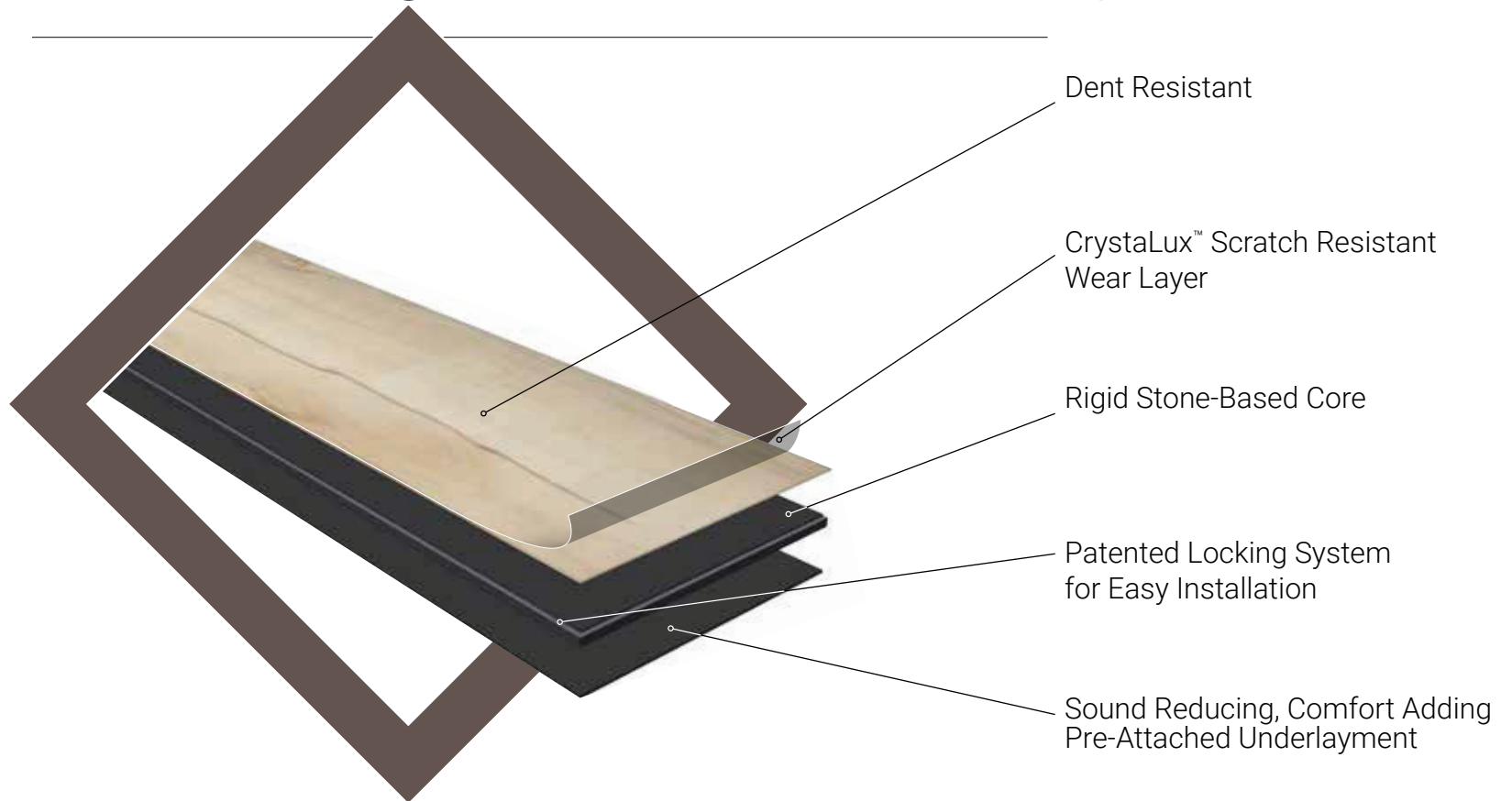


### Katavia Series

6"x48"  
2.0 mm thickness  
6 mil wear layer



# The Ultimate Worry-Proof Flooring



## **Lasting Beauty**

With 67 designs/colors ranging from refined rustic to modern, with authentic wood texture, Everlife provides timeless beauty.

## **Worry-proof Flooring**

Everlife offers an exceptionally hard-wearing top layer. This means less wear, less maintenance and no fuss, waterproof and water resistant, with exceptional indentation resistance, Everlife provides the ultimate flooring experience.



100%  
Waterproof



Stain  
Resistant



Installs  
Anywhere  
Indoors



Fast  
Affordable  
Installation



Attached  
Underlayment



High  
Dimensional  
Stability



Patented  
Locking System  
Technology



Residential  
Lifetime  
Warranty



Up to 10-Year Light  
Commercial  
Warranty\*



Up to 5-Year  
Commercial  
Warranty\*

\* Go to [www.EverlifeLVT.com](http://www.EverlifeLVT.com) for specific details.

# Everlife™

From MSI

[EverlifeLVT.com](http://EverlifeLVT.com)





## Coordinating Transitions / Trims Available



End Cap



T-Molding



Surface Reducer



Stair Nose (Overlapping)



Stair Nose (Flush)



Quarter Round



BARRELL

# CYRUS

## Waterproof Rigid-Core Flooring

# SERIES

---

**Size:** 7"x48" • **Thickness:** 5mm (4mm core + 1mm IXPE back) • **Wear layer:** 12 mil

**Warranty:** Lifetime Limited Residential, 6-year limited light commercial

---

Want to learn more about Cyrus? Visit [EverlifeLVT.com](https://EverlifeLVT.com) with a scan.







# CYRUS SERIES

7"x48"

AKADIA

BRALY

BARRELL



# CYRUS SERIES

7"x48"



EXOTIKA



FAUNA



FINELY











# CYRUS SERIES

7"x48"

HAWTHORNE

KATELLA  
ASH

LUDLOW



**CYRUS**SERIES

7"x48"



MEZCLA



RYDER



SANDINO










# CYRUS SERIES

7"x48"



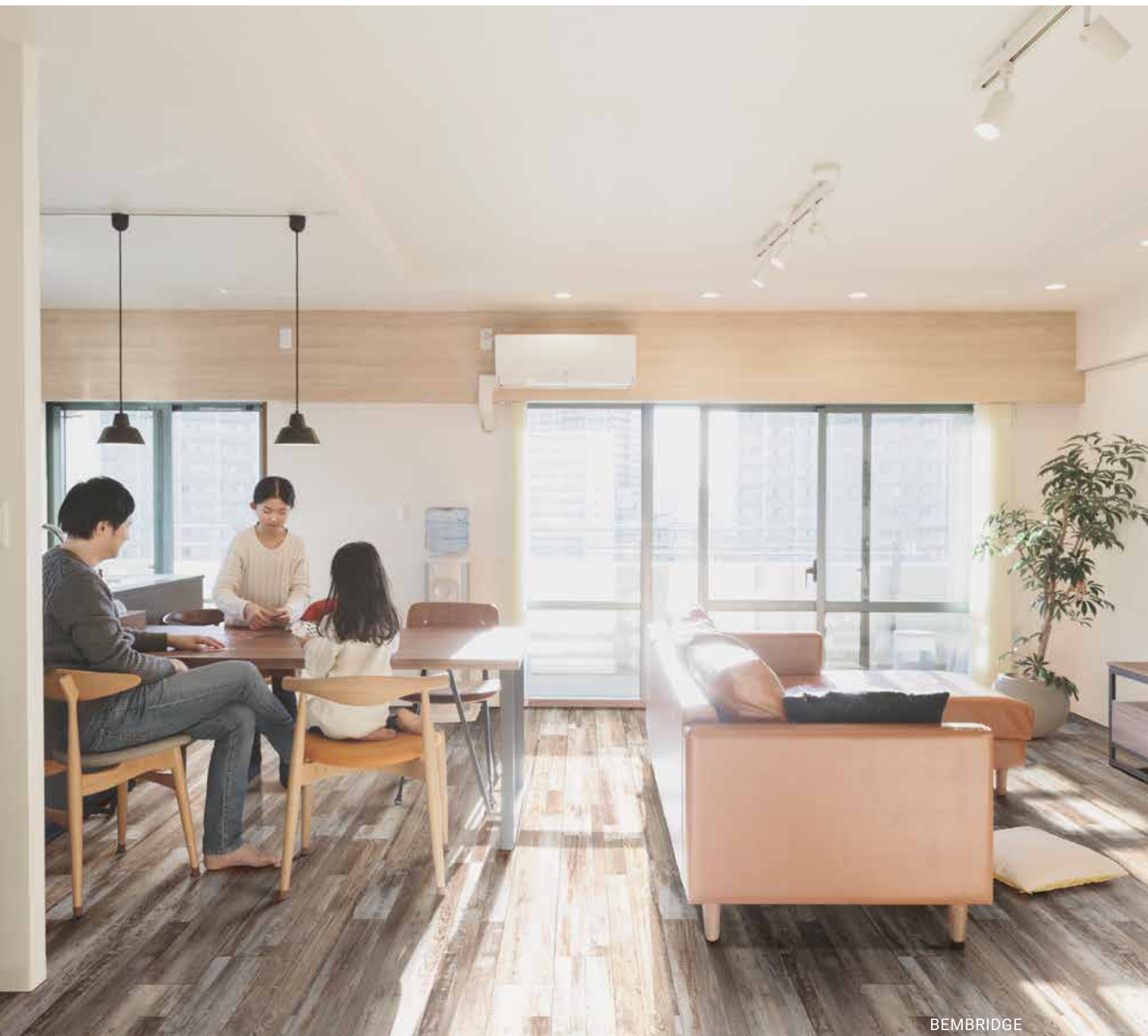
STABLE



WEATHERED  
BRINA



WHITFIELD  
GRAY



# CYRUS SERIES

7"x48"



BEMBRIDGE





AKADIA



BRALY



FAUNA



FINELY



HAWTHORNE



KATELLA ASH



LUDLOW



WHITFIELD GRAY



XL CYRUS FINELY

# XL CYRUS

## Waterproof Rigid-Core Flooring

# SERIES

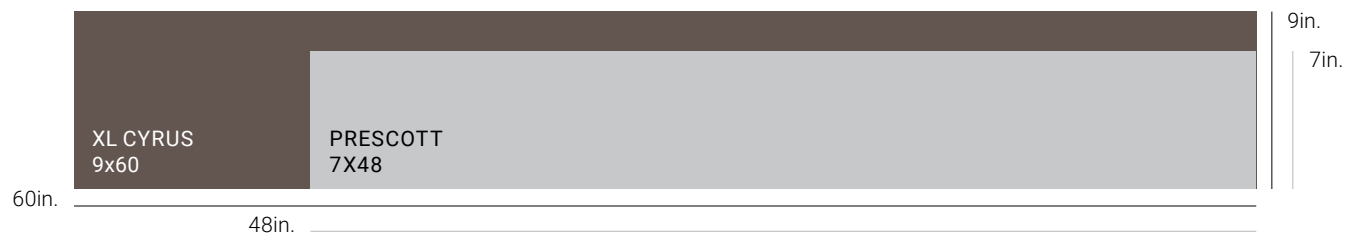
\* FEATURING A CUSTOM DESIGNED BEVELED EDGE

**Size:** 9"x60" • **Thickness:** 5mm (4mm core + 1mm IXPE back) • **Wear layer:** 12 mil  
**Warranty:** Residential Lifetime Warranty, 6-year light commercial Warranty

Want to learn more about XL Cyrus? Visit [EverlifeLVT.com](https://EverlifeLVT.com) with a scan.



### XL CYRUS VS. PRESCOTT





XL AKADIA



**XL CYRUS**SERIES  
9"x60"



XL AKADIA



XL BRALY



XL FAUNA

# XL CYRUS SERIES

9"x60"



XL HAWTHORNE

XL KATELLA ASH

XL LUDLOW



XL KATELLA ASH





XL WHITFIELD GRAY

**XL CYRUS**SERIES  
9"x60"



XL FINELY

XL WHITFIELD GRAY





# ANDOVER

## Waterproof Rigid-Core Flooring

# SERIES

\* FEATURING A CUSTOM DESIGNED BEVELED EDGE

---

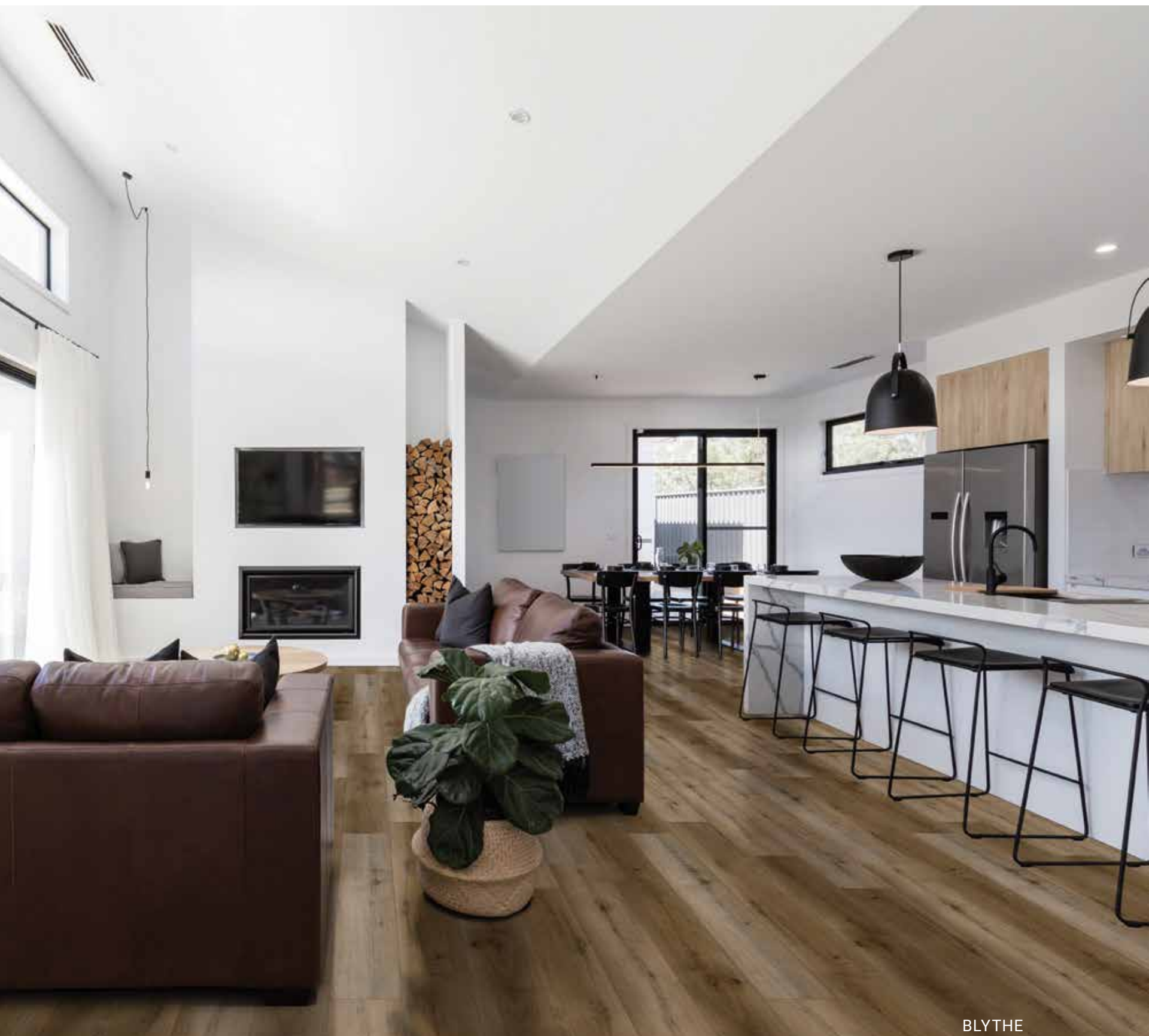
**Size:** 7"x48" • **Thickness:** 5mm (4mm core + 1mm IXPE back)

**Wear layer:** 20 mil • **Warranty:** Lifetime Residential, 10-year light commercial, 5-year commercial

---

Want to learn more about Andover? Visit [EverlifeLVT.com](https://EverlifeLVT.com) with a scan.





BLYTHE

# ANDOVER SERIES

7"x48"

ABINGDALE

BAYHILL  
BLONDE

BLYTHE



# ANDOVERSERIES

7"x48"



DAKWORTH



HATFIELD



HIGHCLIFFE  
GREIGE









WHITBY WHITE



# ANDOVER SERIES

7"x48"



KINGSDOWN  
GRAY



WHITBY  
WHITE



LUDLOW

# PRESCOTT

## Waterproof Rigid-Core Flooring

# SERIES

---

**Size:** 7"x48" • **Thickness:** 6.5mm (5.5mm core + 1mm IXPE back)

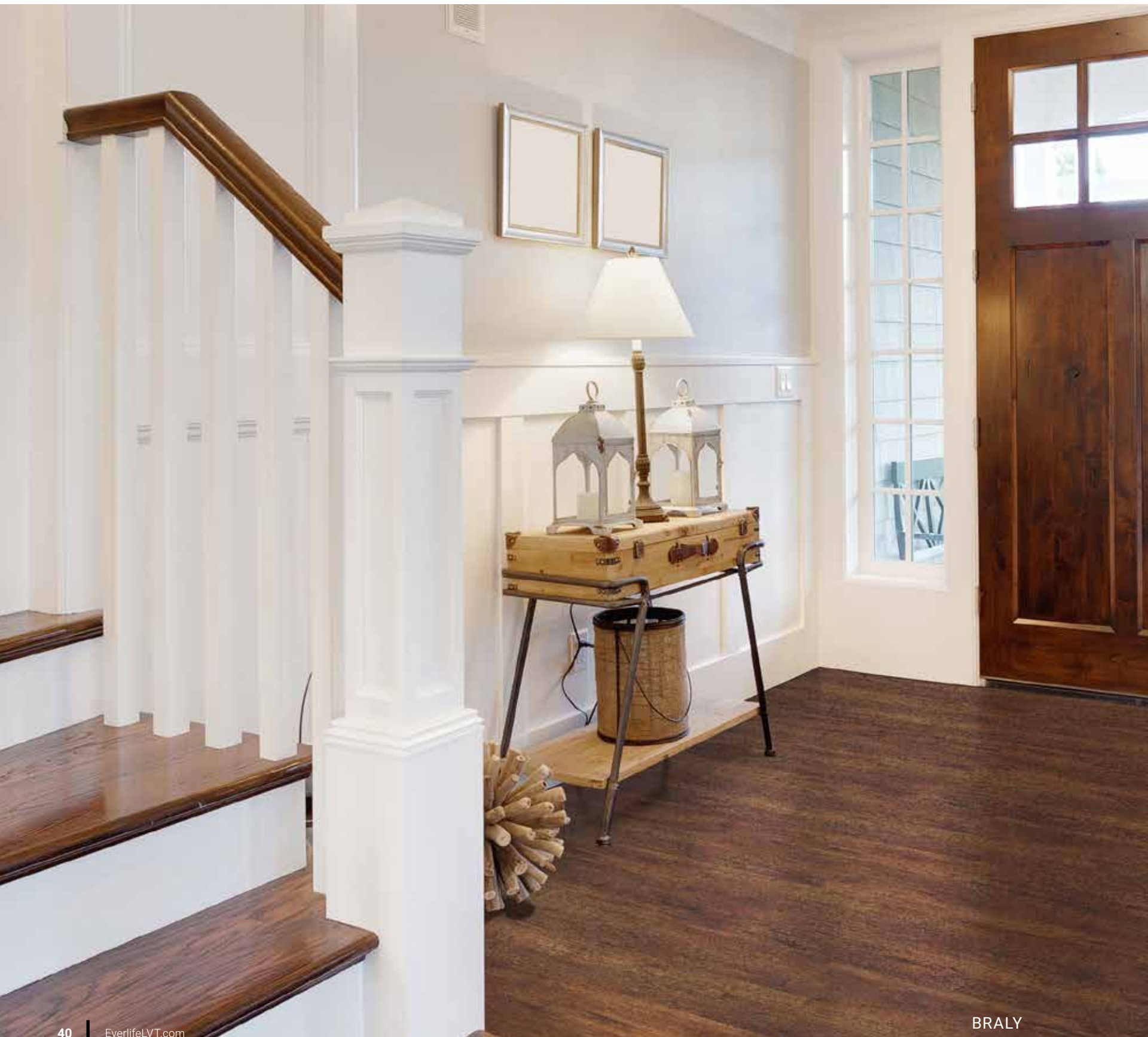
**Wear layer:** 20 mil • **Warranty:** Lifetime Limited Residential, 10-year limited light commercial, 5-year limited commercial

---

Want to learn more about Prescott? Visit [EverlifeLVT.com](https://EverlifeLVT.com) with a scan.







**PRESCOTT**SERIES  
7"x48"



AKADIA



BRALY



FAUNA





# PRESCOTT SERIES

7"x48"

LUDLOW



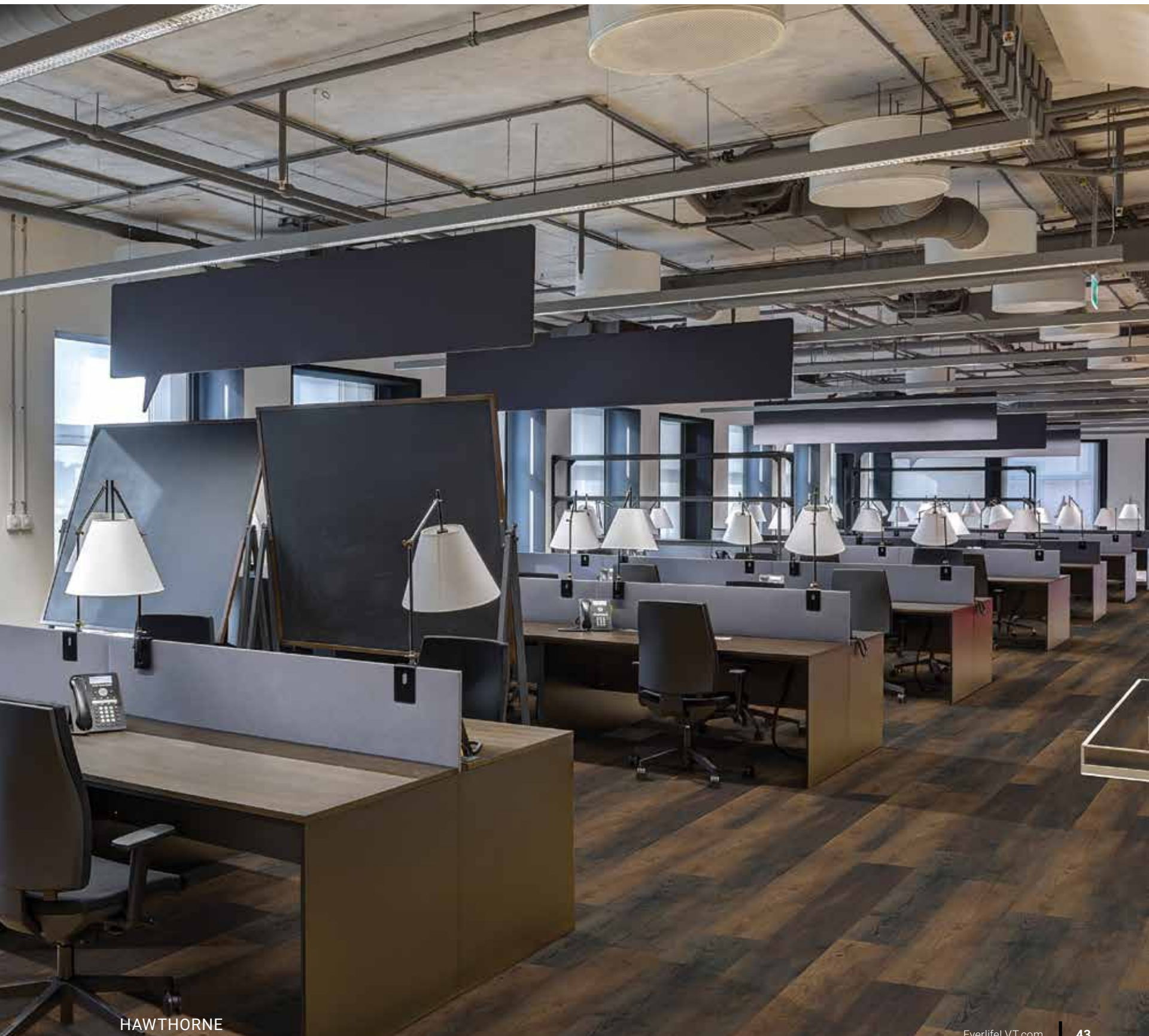
KATELLA ASH



HAWTHORNE









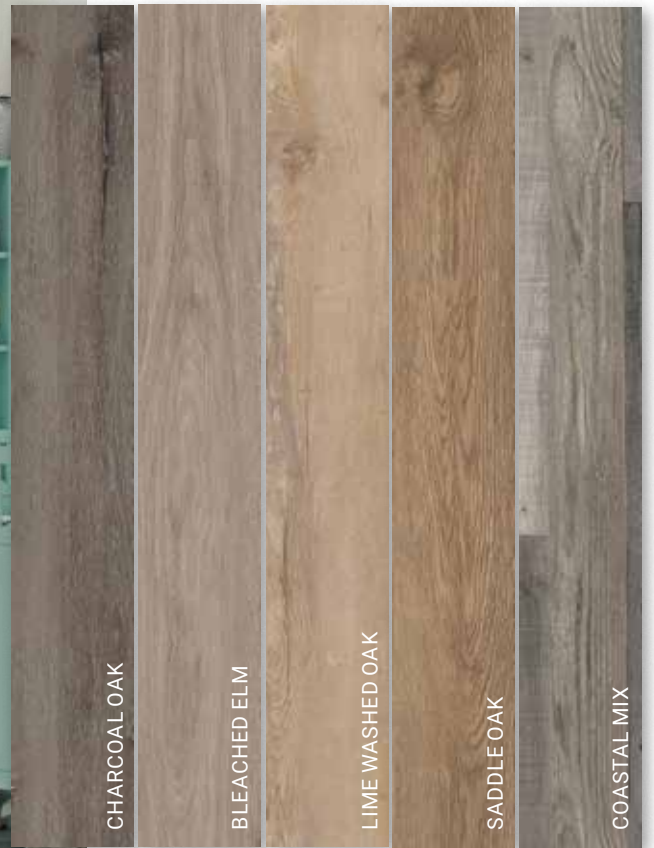


**PRESCOTT**SERIES  
7"x48"



WHITFIELD  
GRAY





# KATAVIA, GLENRIDGE & WILMONT

## Glue Down Flexible

# SERIES



### KATAVIA SERIES

**Size:** 6"x48" • **Thickness:** 2mm • **Wear layer:** 6 mil • **Warranty:** 15-year limited residential



### GLENRIDGE SERIES

**Size:** 6"x48" • **Thickness:** 2mm • **Wear layer:** 12 mil  
**Warranty:** 25-year limited residential, 6-year limited light commercial



### WILMONT SERIES

**Size:** 7"x48" • **Thickness:** 2.5mm • **Wear layer:** 20 mil  
Optional sound mitigation underlayment available  
**Warranty:** Lifetime-limited residential, 10-year limited light commercial, 5-year limited commercial

# GLUE DOWN FLEXIBLE

6"x48", 7"x48"



## Twilight Oak

(Katavia) **Size:** 6x48, 2.00 sqft/piece • **Thickness:** 2MM • **Wear layer:** 6mil  
(Glenridge) **Size:** 6x48, 2.00 sqft/piece • **Thickness:** 2MM • **Wear layer:** 12mil  
(Wilmont) **Size:** 7x48, 2.47 sqft/piece • **Thickness:** 2.5MM • **Wear layer:** 20mil



## Reclaimed Oak

(Katavia) **Size:** 6x48, 2.00 sqft/piece • **Thickness:** 2MM • **Wear layer:** 6mil  
(Glenridge) **Size:** 6x48, 2.00 sqft/piece • **Thickness:** 2MM • **Wear layer:** 12mil  
(Wilmont) **Size:** 7x48, 2.47 sqft/piece • **Thickness:** 2.5MM • **Wear layer:** 20mil



## Elmwood Ash

(Katavia) **Size:** 6x48, 2.00 sqft/piece • **Thickness:** 2MM • **Wear layer:** 6mil  
(Glenridge) **Size:** 6x48, 2.00 sqft/piece • **Thickness:** 2MM • **Wear layer:** 12mil  
(Wilmont) **Size:** 7x48, 2.47 sqft/piece • **Thickness:** 2.5MM • **Wear layer:** 20mil







### Woodrift Gray

(Katavia) **Size:** 6x48, 2.00 sqft/piece • **Thickness:** 2MM • **Wear layer:** 6mil  
(Glenridge) **Size:** 6x48, 2.00 sqft/piece • **Thickness:** 2MM • **Wear layer:** 12mil  
(Wilmont) **Size:** 7x48, 2.47 sqft/piece • **Thickness:** 2.5MM • **Wear layer:** 20mil



### Burnished Acacia

(Katavia) **Size:** 6x48, 2.00 sqft/piece • **Thickness:** 2MM • **Wear layer:** 6mil  
(Glenridge) **Size:** 6x48, 2.00 sqft/piece • **Thickness:** 2MM • **Wear layer:** 12mil  
(Wilmont) **Size:** 7x48, 2.47 sqft/piece • **Thickness:** 2.5MM • **Wear layer:** 20mil



### Charcoal Oak

(Katavia) **Size:** 6x48, 2.00 sqft/piece • **Thickness:** 2MM • **Wear layer:** 6mil  
(Glenridge) **Size:** 6x48, 2.00 sqft/piece • **Thickness:** 2MM • **Wear layer:** 12mil  
(Wilmont) **Size:** 7x48, 2.47 sqft/piece • **Thickness:** 2.5MM • **Wear layer:** 20mil

CHARCOAL OAK

# GLUE DOWN FLEXIBLE

6"x48", 7"x48"



## Bleached Elm

(Katavia) **Size:** 6x48, 2.00 sqft/piece • **Thickness:** 2MM • **Wear layer:** 6mil  
(Glenridge) **Size:** 6x48, 2.00 sqft/piece • **Thickness:** 2MM • **Wear layer:** 12mil



## Lime Washed Oak

(Glenridge) **Size:** 6x48, 2.00 sqft/piece • **Thickness:** 2MM • **Wear layer:** 12mil  
(Wilmont) **Size:** 7x48, 2.47 sqft/piece • **Thickness:** 2.5MM • **Wear layer:** 20mil



LIME WASHED OAK





# GLUE DOWN FLEXIBLE

6"x48", 7"x48"



## Saddle Oak

(Glenridge) **Size:** 6x48, 2.00 sqft/piece • **Thickness:** 2MM • **Wear layer:** 12mil



## Coastal Mix

(Glenridge) **Size:** 6x48, 2.00 sqft/piece • **Thickness:** 2MM • **Wear layer:** 12mil



## Tawny Birch

(Glenridge) **Size:** 6x48, 2.00 sqft/piece • **Thickness:** 2MM • **Wear layer:** 12mil



TAWNY BIRCH



### **Midnight Maple**

(Glenridge) **Size:** 6x48, 2.00 sqft/piece • **Thickness:** 2MM • **Wear layer:** 12mil



### **Aged Hickory**

(Glenridge) **Size:** 6x48, 2.00 sqft/piece • **Thickness:** 2MM • **Wear layer:** 12mil



### **Jatoba**

(Glenridge) **Size:** 6x48, 2.00 sqft/piece • **Thickness:** 2MM • **Wear layer:** 12mil

# See it on your floor...

## [www.EverlifeLVT.com](http://www.EverlifeLVT.com)

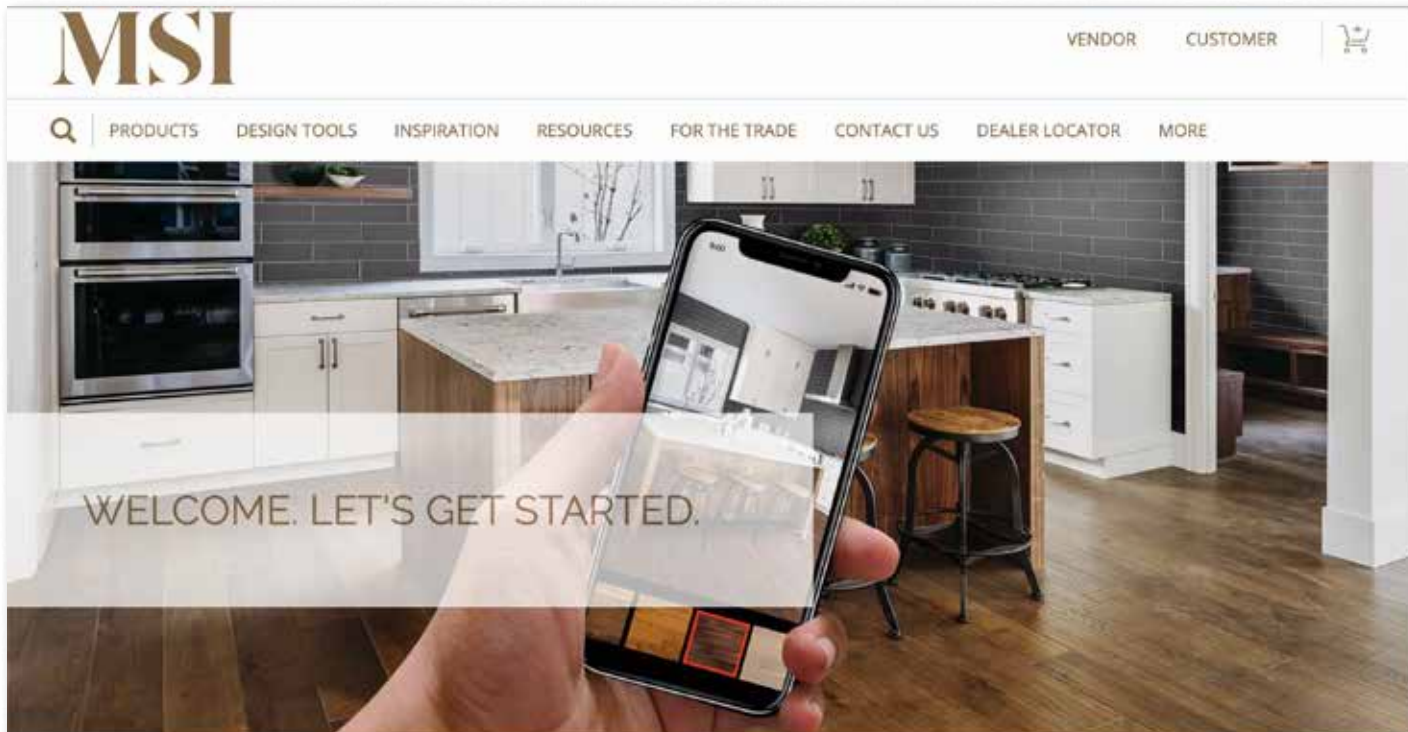
---

Visit us at [everlifelt.com](http://everlifelt.com). You can try out Everlife on your own floor by way of our online visualizer, view inspirational galleries, find detailed specification sheets and warranty information, and explore the latest developments from MSI.



Information in this catalog is subject to change without notice. Color and design accuracy may vary due to printing.  
Sizes expressed in this catalog are nominal. Check with our sales teams for the exact measurement.





## VISUALIZE ANY FLOOR

### Remodeling? Want to

MSI continues to innovate and re-envision how customers select interior and exterior design. Our new look in your space.

Try our Floor Visualizer

1

Select any flooring product from our website

2

Snap a photo of your room

**VISUALIZER TOOLS**

MSI International continues to innovate and re-envision how customers select natural stone and tile for their interior and exterior design projects. Our popular web-based Virtual Kitchen Designer tool is now available for iPhone, and iPad and we are pleased to announce the launch of the Bathroom Visualizer, Countertop Edge Visualizer and the Stacked Stone Visualizer. We will continue our pursuit to make your experience better, check back often as there are even more tools on the horizon.

**VISUALIZE ANY FLOOR**  
Snap a photo, and we showcase selected products in your room in seconds.

**VIRTUAL KITCHEN DESIGNER**  
Thousands of design combinations, select from cabinet colors, backplash, countertops, and flooring.

**BATHROOM VISUALIZER**  
Visualize cabinet colors, backslashes, countertops, flooring, and shower surrounds.







MSI developed the most on-trend designs in luxury vinyl flooring with its Everlife™ collection which induces high variation designs. It is recommended that any consumer go to **[msisurfaces.com](https://www.msisurfaces.com)** or view a display sample with room scene to see the high color variation. It also is recommended that a consumer use a qualified installer who works with a recommended dealer, that will follow the installation instructions for Everlife™ products.



Everlife™  
LUXURY VINYL TILE



**MSI HEADQUARTERS • 2095 N. BATAVIA STREET • ORANGE, CA 92865 • 714.685.7500**

**[WWW.MSISURFACES.COM](http://WWW.MSISURFACES.COM)**

---

Slabs & Countertops • Porcelain & Ceramic • Luxury Vinyl Tile  
Hardscapes • Natural Stone • Decorative Accents