

MSI

Making Dream Surfaces Attainable



Highland Park
Ceramic Collection

www.msisurfaces.com

Colors

Antique White



2" x 6" Beveled



3" x 6"



4" x 12"



Arabesque



Elongated Hexagon



Crown Molding
(0.31" Thickness)



Quarter Round Molding
(0.25" Thickness)

Dove Gray



2" x 6" Beveled



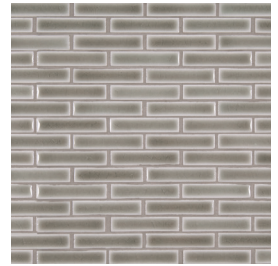
3" x 6"



4" x 12"



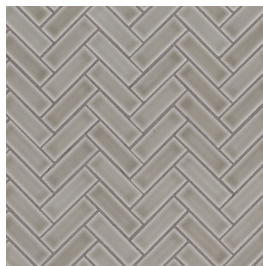
Arabesque



Brick Pattern



Diamond



Herringbone



Crown Molding
(0.31" Thickness)



Quarter Round Molding
(0.25" Thickness)

Artisan Taupe



2" x 6" Beveled



3" x 6"



4" x 12"



Arabesque



Quarter Round Molding
(0.25" Thickness)

Morning Fog



2" x 6" Beveled



3" x 6"



4" x 12"



Ogee



Arabesque



Quarter Round Molding
(0.25" Thickness)

Portico



2" x 6" Beveled



3" x 6"



4" x 12"



Arabesque



Herringbone



Quarter Round Molding
(0.25" Thickness)

Whisper White



2" x 6" Beveled



3" x 6"



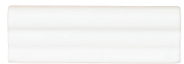
Arabesque



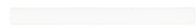
Arched Herringbone



Hexagon



Crown Molding
(0.31" Thickness)



Quarter Round Molding
(0.25" Thickness)

Size	Thickness	Product ID
Antique White 2X6 Beveled	0.31"	SMOT-PT-AW-2X6B
Antique White Glazed Hand Crafted 3X6	0.31"	SMOT-PT-AW36
Antique White Glazed Hand Crafted 4X12	0.31"	SMOT-PT-AW412
Antique White Arabesque 8mm	0.31"	SMOT-PT-AW-ARABESQ
Antique White Elongated Hexagon 8mm	0.31"	SMOT-PT-AW-HEXEL
Antique White 2X6 Crown Molding	0.31"	SMOT-PT-CRWN-AW2X6
Antique White 5/8X6 Quarter Round Molding	0.25"	SMOT-PT-QTRRD-AW5/8X6
Dove Gray 2X6 Beveled	0.31"	SMOT-PT-DG-2X6B
Dove Gray Glazed Hand Crafted 3X6	0.31"	SMOT-PT-DG36
Dove Gray Glazed Hand Crafted 4X12	0.31"	SMOT-PT-DG412
Dove Gray Arabesque 8mm	0.31"	SMOT-PT-DG-ARABESQ
Dove Gray Brick Pattern 8mm	0.31"	SMOT-PT-DG-BRK
Dove Gray Diamond 8mm	0.31"	SMOT-PT-DG-DIAMOND
Dove Gray Herringbone Pattern 8mm	0.31"	SMOT-PT-DG-HB
Dove Gray 2X6 Crown Molding	0.31"	SMOT-PT-CRWN-DG2X6
Dove Gray 5/8X6 Quarter Round Molding	0.25"	SMOT-PT-QTRRD-DG5/8X6
Artisan Taupe 2X6 Beveled	0.31"	SMOT-PT-ARTA-2X6B
Artisan Taupe Glazed Hand Crafted 3X6	0.31"	SMOT-PT-ARTA36
Artisan Taupe Glazed Hand Crafted 4X12	0.31"	SMOT-PT-ARTA412
Artisan Taupe Arabesque 8mm	0.31"	SMOT-PT-ARTA-ARABESQ
Artisan Taupe 5/8X6 Quarter Round Molding	0.25"	SMOT-PT-QTRRD-ARTA5/8X6
Morning Fog 2X6 Beveled	0.31"	SMOT-PT-MOFOG-2X6B
Morning Fog Glazed Hand Crafted 3X6	0.31"	SMOT-PT-MOFOG36
Morning Fog Glazed Hand Crafted 4X12	0.31"	SMOT-PT-MOFOG412
Morning Fog Ogee 8mm	0.31"	SMOT-PT-MOFOG-OGEE
Morning Fog Arabesque 8mm	0.31"	SMOT-PT-MOFOG-ARABESQ
Morning Fog 5/8X6 Quarter Round Molding	0.25"	SMOT-PT-QTRRD-MOFOG5/8X6
Portico Pearl 2x6 Beveled	0.31"	SMOT-PT-PORPEA-2X6B
Portico Pearl Subway Tile 3x6	0.31"	SMOT-PT-PORPEA36
Portico Pearl Subway Tile 4x12	0.31"	SMOT-PT-PORPEA412
Portico Pearl Arabesque 8mm	0.31"	SMOT-PT-PORPEA-ARABESQ
Portico Pearl Herringbone Pattern 8mm	0.31"	SMOT-PT-PORPEA-HB
Portico Pearl Quarter Round 5/8x6 Mldg	0.25"	SMOT-PT-QTRRD-PORPEA5/8X6
Whisper White 2X6 Beveled	0.31"	SMOT-PT-WW-2X6B
Whisper White Glazed Hand Crafted 3X6	0.31"	SMOT-PT-WW36
Whisper White Arabesque 8mm	0.31"	SMOT-PT-WW-ARABESQ
Whisper White Arched Herringbone 8mm	0.31"	SMOT-PT-WW-AHB
Whisper White 2" Hexagon 8mm	0.31"	SMOT-PT-WW-2HEX
Whisper White 2X6 Crown Molding	0.31"	SMOT-PT-CRWN-WW2X6
Whisper White 5/8X6 Quarter Round Molding	0.25"	SMOT-PT-QTRRD-WW5/8X6

APPLICATIONS	Flooring	Counters	Wall	PEI Rating	Variation	COF	Freeze/Thaw	Breaking Strength	Water Absorption	Hardness	Chemical Resistance
RESIDENTIAL		●	●	IV	V3	SCOF - > 0.60 Wet DCOF - > 0.42 Wet	Resistant	> 275 lbf	< 0.5%	7	Resistant
LIGHT COMMERCIAL		●	●								
HEAVY COMMERCIAL		●	●								

A beautiful collection of sophisticated tile style, these weathered hues of intricate glazing offer a subtle beauty that can only be achieved in a hand crafted tile. The classic look of subway tiles are largely popular in the design community. The versatility of these tiles offer looks that appeal to multiple design aesthetics. Pair these high end subway tiles with luxurious stones and unique coordinating mosaics, and you will create designs that will last through the decades.

Technical Information

Primary Colors: White, Cream, Gray
Material Type: Ceramic
Finish: Glazed
Polished: Hardness / Mohs 5
Matte: Hardness / Mohs 7

Installation

1/8" Grout Size is recommended on all tile installation. When installing rectangular tiles a less than 33% staggered brick lay is strongly recommended.

Disclaimer : Wet Cutting Instruction: We recommend wet cutting or the score & snap method during the installation process. Do not dry cut product using power tools during the installation process. Improper installation techniques could expose installer to harmful silica dust. Recomendamos el corte en húmedo o el método de marcar y encajar durante el proceso de instalación. No corte en seco el producto utilizando herramientas eléctricas durante el proceso de instalación. Las técnicas de instalación inadecuadas podrían exponer al instalador a polvo de sílice nocivo.

Variation in shade is an inherent attribute of porcelain tile.

To ensure customer satisfaction: Make sure to look over all tiles before installing. Please select tile from same lot: same size, and numerical shade.

Intersperse tiles throughout your job from different boxes. Rotate the tiles so there won't be repetitive patterns.

*No claims accepted after tile installation.

Features At A Glance

- Classic 3x6 & 4x12 Subway Tile Shape
- Hand crafted tile looks, some undulated, some crackled
- Coordinating Mosaics
- Matching Trim Piecing

Large format tiles: It is mandatory that the mortar coverage on the floor surface and tile be greater than 95% coverage to be fully supported. Voids due to insufficient coverage will result in cracking and tile displacement.

