

Features At A Glance

Highly Durable - best-in-class resistance to impact and scratch, and designed to be heat resistant up to 535F

Lasting Beauty - velvety smooth finish is resistant to stains and smudges, and UV protected surface protects against fading

Family Friendly - non-porous surface does not harbor bacteria, and the thick construction provides superior sound absorption when using the sink

Matte Black



SIN-QTZ-DBLBWL-5050-3219-BLK

Outside - 32 1/2"x19 1/2"
 Left Inside - 14 1/2"x15 3/4"
 Right Side - 14 1/2"x15 3/4"
 Depth - 9"/9"
 Minimum Cabinet - 36"



SIN-QTZ-DBLBWL-6040-3219-BLK

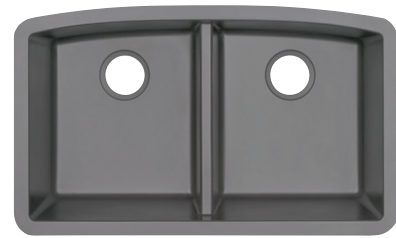
Outside - 32 1/2"x19 1/2"
 Left Inside - 17 1/2"x15 3/4"
 Right Side - 11 3/8"x15 3/4"
 Depth - 9"/9"
 Minimum Cabinet - 36"



SIN-QTZ-SINBWL-3219-BLK

Outside - 32 1/2"x19 1/2"
 Inside - 30"x15 3/4"
 Depth - 9"/9"
 Minimum Cabinet - 36"

Matte Gray



SIN-QTZ-DBLBWL-5050-3219-GRY

Outside - 32 1/2"x19 1/2"
 Left Inside - 14 1/2"x15 3/4"
 Right Side - 14 1/2"x15 3/4"
 Depth - 9"/9"
 Minimum Cabinet - 36"



SIN-QTZ-DBLBWL-6040-3219-GRY

Outside - 32 1/2"x19 1/2"
 Left Inside - 17 1/2"x15 3/4"
 Right Side - 11 3/8"x15 3/4"
 Depth - 9"/9"
 Minimum Cabinet - 36"



SIN-QTZ-SINBWL-3219-GRY

Outside - 32 1/2"x19 1/2"
 Inside - 30"x15 3/4"
 Depth - 9"/9"
 Minimum Cabinet - 36"